



The heart of Incredible India

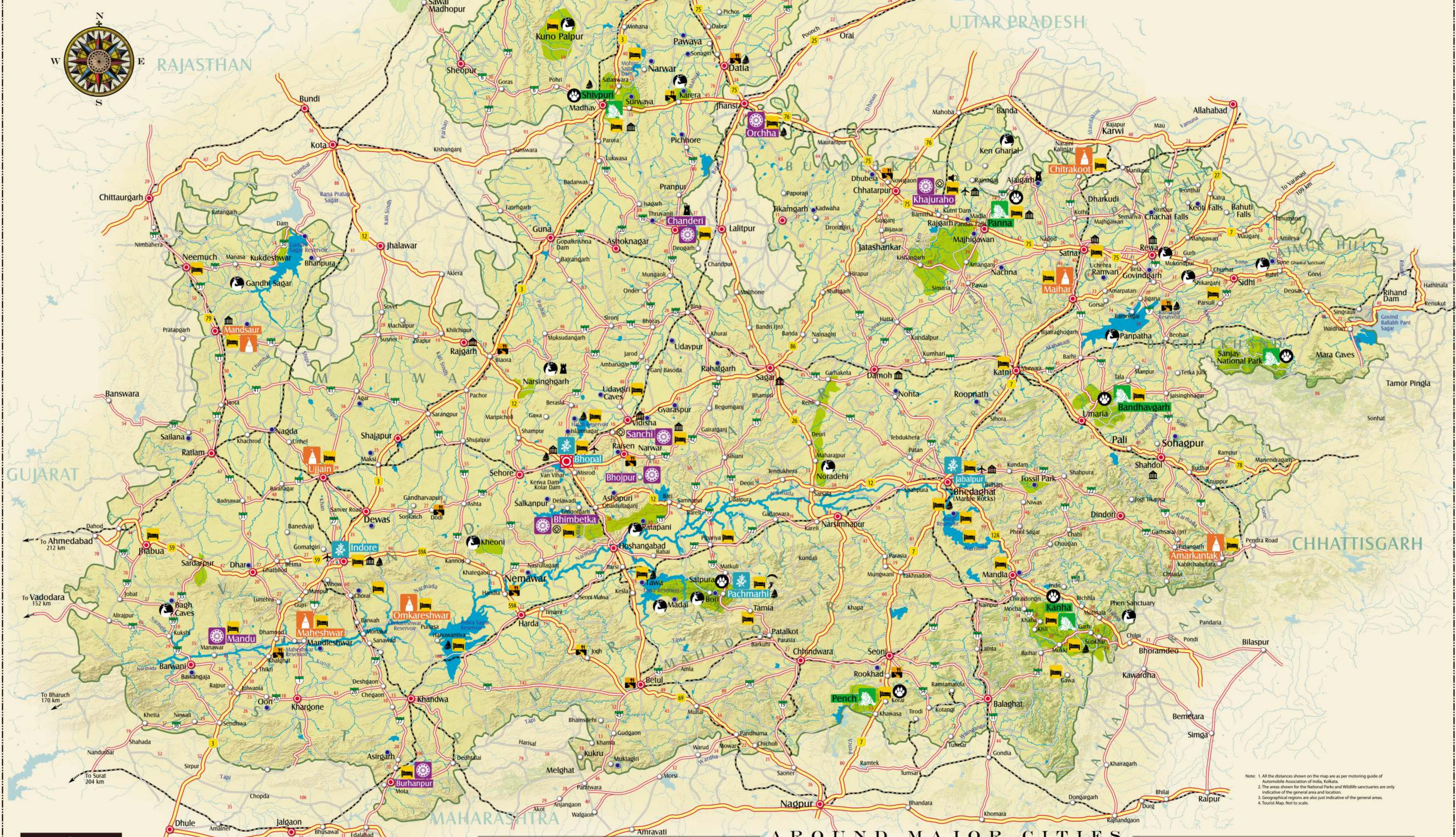
# TOURIST MAP MADHYA PRADESH *The Heart of Incredible India*

**LEGENDS**

--	--	--	--	--	--	--	--	--	--	--	--	--	--	--	--	--	--	--	--	--	--	--	--



Few regions in India can match Madhya Pradesh in sheer diversity. Its rich heritage, legendary pilgrim centres, breathtaking scenic beauty and unparalleled wildlife make it truly unique. It has three World Heritage sites Sanchi, Khajuraho and Bhimbetka and it is also the Tiger State of India. Welcome to a many-splendoured land!



**Distance chart in Kms**

	Heritage	Wildlife	Leisure	Pilgrimage	TOURIST PLACES																				
Amarkantak	●	●	●	●	305																				
Bandhavgarh	●	●	●	●	432	503	229																		
Bhimbetka	●	●	●	●	46	48	49	565	403	565															
Bhopal	●	●	●	●	251	540	188	626	721	706	235														
Chanderi	●	●	●	●	578	540	469	208	638	164	202	726	707												
Chitrakoot	●	●	●	●	605	420	186	230	288	164	202	726	707	440											
Gwalior	●	●	●	●	666	784	391	330	294	459	433	321	378	309	308										
Indore	●	●	●	●	486	486	275	440	230	383	439	321	378	309	308	784									
Jabalpur (Marble Rocks)	●	●	●	●	400	465	651	205	572	803	277	285	378	309	308	634	479								
Kanha	●	●	●	●	165	569	591	99	99	863	489	264	387	443	381	92	573								
Khajuraho	●	●	●	●	422	571	571	571	571	571	571	571	571	571	571	571	571								
Maheshwar	●	●	●	●	660	744	579	569	78	481	119	519	60	159	48	92	357	285							
Mandu	●	●	●	●	63	688	647	723	584	389	341	321	380	550	464	127	311	182	285						
Omkareshwar	●	●	●	●	195	62	589	170	341	341	341	341	341	341	341	341	341								
Orchha	●	●	●	●	590	450	412	391	381	381	381	381	381	381	381	381	381								
Pachmarhi	●	●	●	●	592	399	319	311	387	463	280	571	642	216	606	627	215	606							
Sanchi	●	●	●	●	341	506	125	380	380	380	380	380	380	380	380	380	380								
Shivpuri	●	●	●	●	286	284	383	381	515	666	542	512	250	215	606	627	215	606							
Ujjain	●	●	●	●	343	584	461	381	515	666	542	512	250	215	606	627	215	606							
Pench	●	●	●	●	538																				

**AROUND MAJOR CITIES**

Note: 1. All the distances shown on the map are as per motorist guide of Automobile Association of India, Kolkata.  
 2. The areas shown for the National Parks and Wildlife sanctuaries are only indicative of the general area and location.  
 3. Geographical regions are also just indicative of the general areas.  
 4. Tourist Map. Not to scale.